



SCHOOL INFORMATION PROFILE

OUR LADY OF MERCY**October 5, 2016**

All the information contained within the School Information Profile (SIP) relates to the requirements as outlined within the Ministry of Education's Revised Pupil Accommodation Guideline issued March 26, 2015.

TABLE OF CONTENTS

SECTION	ITEM	PAGE
PART 1 – FACILITY PROFILE		
1.1	GENERAL INFORMATION	2
1.2	SITE PLAN	3
1.3	AERIAL PHOTO	5
1.4	ROOM SUMMARY FROM SCHOOL FACILITY INFORMATION SYSTEM (SFIS)	6
1.5	SPACE TEMPLATE FOR ELEMENTARY OR SECONDARY PROPOSED SCHOOL (N/A)	7
1.6	FLOOR PLAN	7
1.7	BOUNDARY MAPS	8
1.8	OFFICIAL PLAN	10
1.9	ZONING BY-LAW	11
PART 2 – FACILITY CONDITION PROFILE		
2.1	FACILITY CONDITION INDEX	12
2.2	10 YEAR RENEWAL HISTORY	12
2.3	5 YEAR RENEWAL REQUIREMENTS	13
2.4	SCHOOL UTILITY COSTS	14
2.5	SCHOOL ACCESSIBILITY MEASURES	14
PART 3 - STUDENT DATA PROFILE		
3.1	ENROLMENT HISTORY (5 YEARS)	15
3.2	ENROLMENT PROJECTIONS (15 YEARS)	15
3.3	STUDENT PROXIMITY	16
3.4	PUPIL DISTRIBUTION	17
3.5	OUT OF AREA STUDENTS	18
3.6	STUDENT TRANSPORTATION	18
PART 4 – INSTRUCTIONAL DATA PROFILE		
4.1	STAFF ALLOCATION TO SCHOOL	19
4.2	SPECIALIZED COURSES AND PROGRAMS	19
4.3	CURRENT GRADE ORGANIZATION ELEMENTARY SCHOOL	20
4.4	CURRENT GRADE ORGANIZATION SECONDARY SCHOOL (N/A)	21
4.5	EXTRA-CURRICULAR ACTIVITIES	21
PART 5 – OTHER SCHOOL USE PROFILE		
5.1	NON SCHOOL PROGRAMS AND SERVICES	22
5.2	COMMUNITY PARTNERSHIPS (N/A)	22
5.3	COMMUNITY USE OF SCHOOL (N/A)	22
5.4	CHILD CARE (N/A)	23
5.5	CONTINUING EDUCATION (N/A)	23
5.6	MUNICIPAL PROPERTY ASSESSMENT CORPORATION / RATEPAYERS ANALYSIS	24
PART 6 – PARISH INFORMATION PROFILE		
6.1	PARISH CONNECTIONS	25
6.2	FAITH FORMATION	25



SCHOOL INFORMATION PROFILE

OUR LADY OF MERCY**October 5, 2016****PART 1 – FACILITY PROFILE****1.1 GENERAL INFORMATION**

The following table provides general information from the School Information profile for the particular school.

School Name	Our Lady of Mercy
Address	2586 Honey Harbour Road, Honey Harbour
Panel	Elementary
Grades Served	JK-8
Ministry On-The-Ground Capacity (OTG)	167
Current Enrolment as of September 2016	16
Current Utilization Rate	10%
Building Area (m2)	1,271 m2
Site Area (ha)	1.82 ha
Original Construction Date	1963
Date(s) of School Addition(s) / Renovations	1969
Hard Surface Play Area (m2)	
Number of parking spaces	20
Number of Portable Classrooms	0
Number / Type of Instructional Rooms	8
Child Care on Site	No
Name of Child Care Provider	n/a
Type of Child Care	n/a
Child Care Capacity	n/a
Child Care Enrolment and Ages Served	n/a



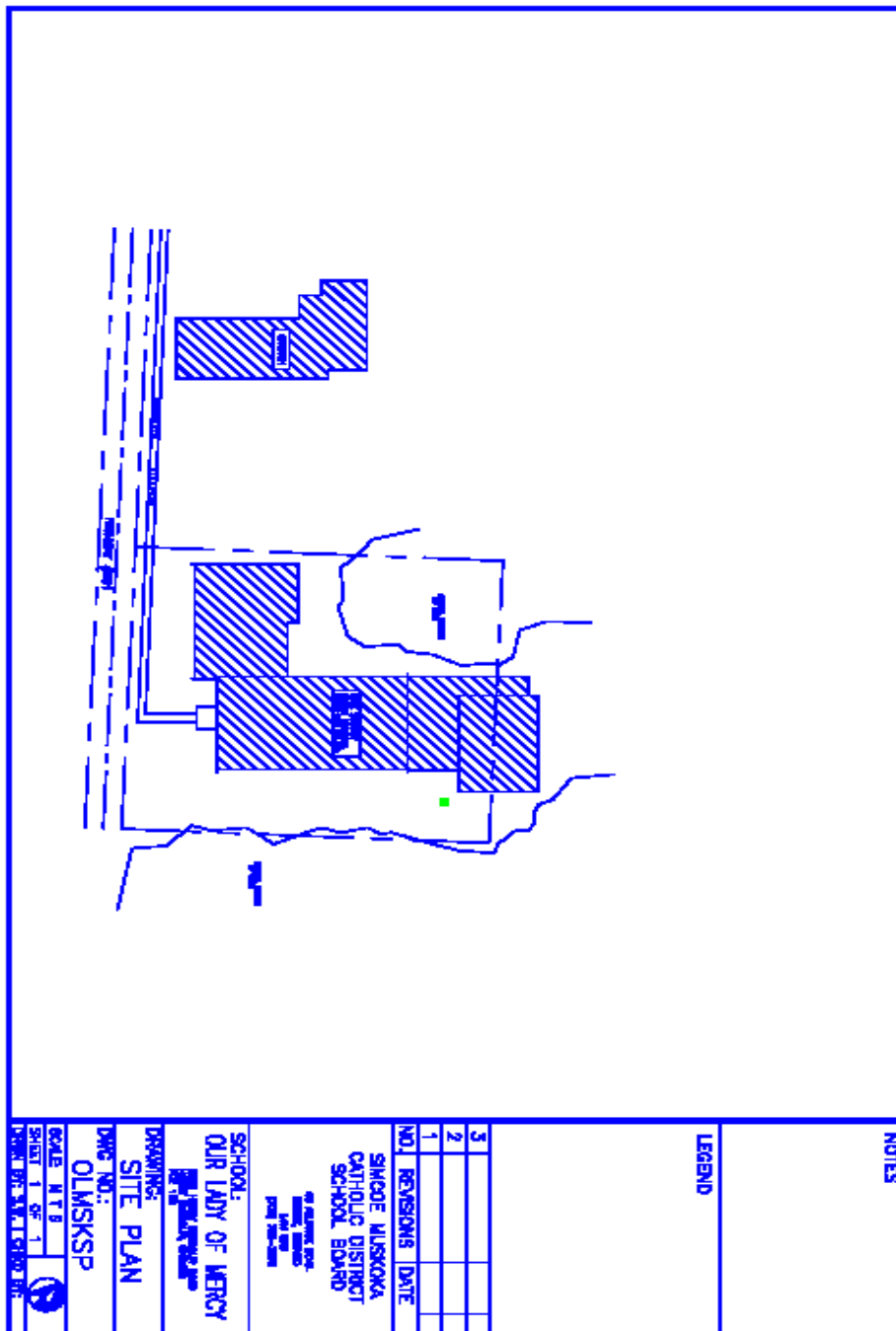
SCHOOL INFORMATION PROFILE

OUR LADY OF MERCY

October 5, 2016

1.2 SITE PLAN

The following provides a map showing the school site, the location of the building, the general parking areas; including driveways, pick up and drop off areas for busses and cars, and outdoor play areas.





SCHOOL INFORMATION PROFILE

OUR LADY OF MERCY

October 5, 2016

Assessment of Parking, Pick-Up and Drop-Off Areas

Provide a written assessment of Parking, Pick-up and Drop-off Areas as outlined on the site plan above.

Notes (if applicable)

- Generally speaking, there are no concerns with parking or pick-up & drop-off areas due to low vehicle volume.
- Pick up and drop off occurs on the street in front of the school.
- There is no bus loop.
- No concerns with parking.



SCHOOL INFORMATION PROFILE

OUR LADY OF MERCY

October 5, 2016

1.3 AERIAL PHOTO

The following provides an aerial photo showing the school site, the property outline of the school and adjacent land uses.

OUR LADY OF MERCY CATHOLIC ELEMENTARY SCHOOL AERIAL MAP





SCHOOL INFORMATION PROFILE

OUR LADY OF MERCY**October 5, 2016****1.4 ROOM SUMMARY FROM SCHOOL FACILITY INFORMATION SYSTEM (SFIS)**

SFIS is the Ministry of Education's School Facility Information System which provides facility details for each school in our jurisdiction. The following information identifies the details related to the space type the school was designed for, the current use of the school classrooms, the On the Ground Capacity (OTG) of the school based on the Space Type and the Functional Capacity (FC) based on the Current Use of the classrooms.

SFIS ID: 8301 Facility Name: Our Lady of Mercy					
Inventory Data - Room Dashboard					
Room Number	Space Type	Current Use	Loading (OTG)	Loading FC	Comments Current 2016/17 Classroom
1	Classroom	Classroom	23	23	JK - 3
2	Classroom	Other	23	0	Custodial Office / Storage
3	Classroom	Other	23	0	Closed
5	Classroom	Classroom	23	23	Grades 4-8
7	Classroom	Other	23	0	Closed
	General Purpose Room	General Purpose Room	0	0	
4	Kindergarten	Resource-General	26	12	Sensory / Special Education
6	Kindergarten	Other	26	0	Closed
	Library Resource Centre	Library Resource	0	0	
	Staff Work Rm./Lounge	Staff Work/Lounge	0	0	
TOTAL LOADING CAPACITY (OTG)			167		
TOTAL FUNCTIONAL CAPACITY (FC)				58	

NOTE:

Loading = Ministry of Education On the Ground Capacity of the school based on the 'Space Type' the school was designed for.

Loading FC = Functional Capacity of the school based on the 'Current Use' of each school classroom.



SCHOOL INFORMATION PROFILE

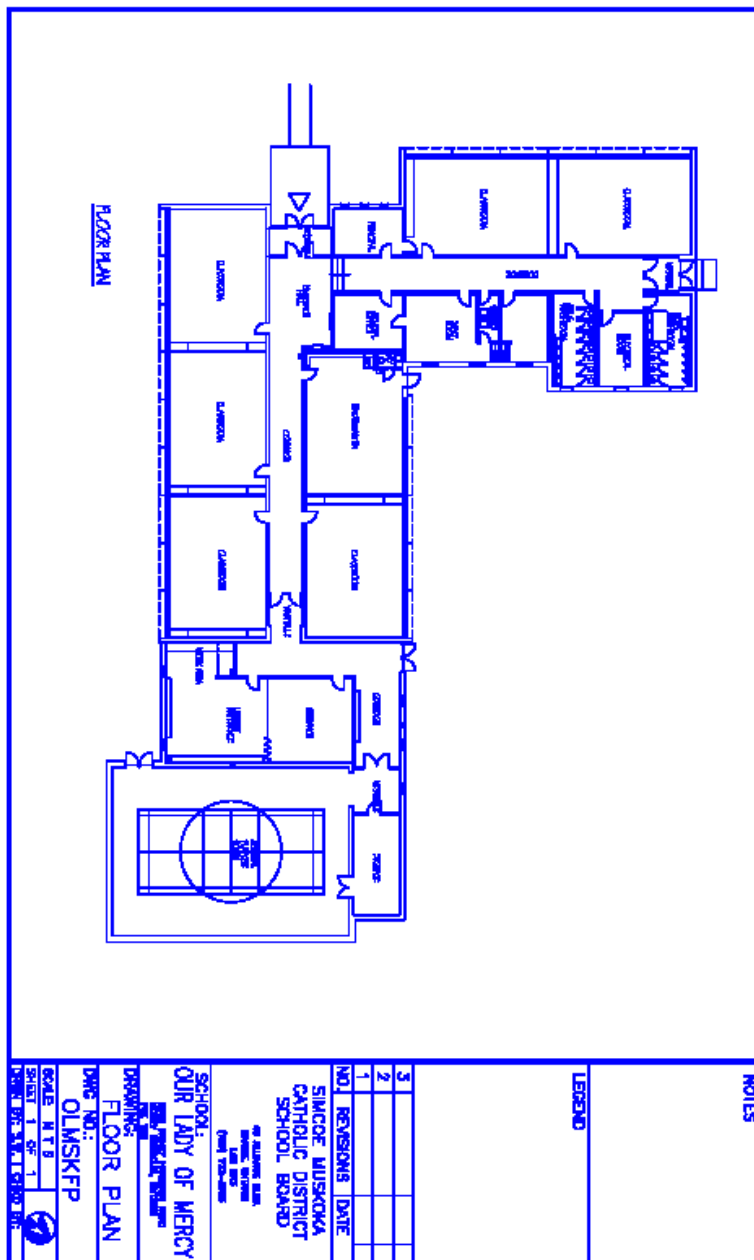
OUR LADY OF MERCY

October 5, 2016

1.5 SPACE TEMPLATE FOR ELEMENTARY OR SECONDARY PROPOSED SCHOOL N/A

1.6 FLOOR PLAN

The following provides a school floor plan outlining the locations of the classroom and other teaching and non-teaching spaces within the school.





SCHOOL INFORMATION PROFILE

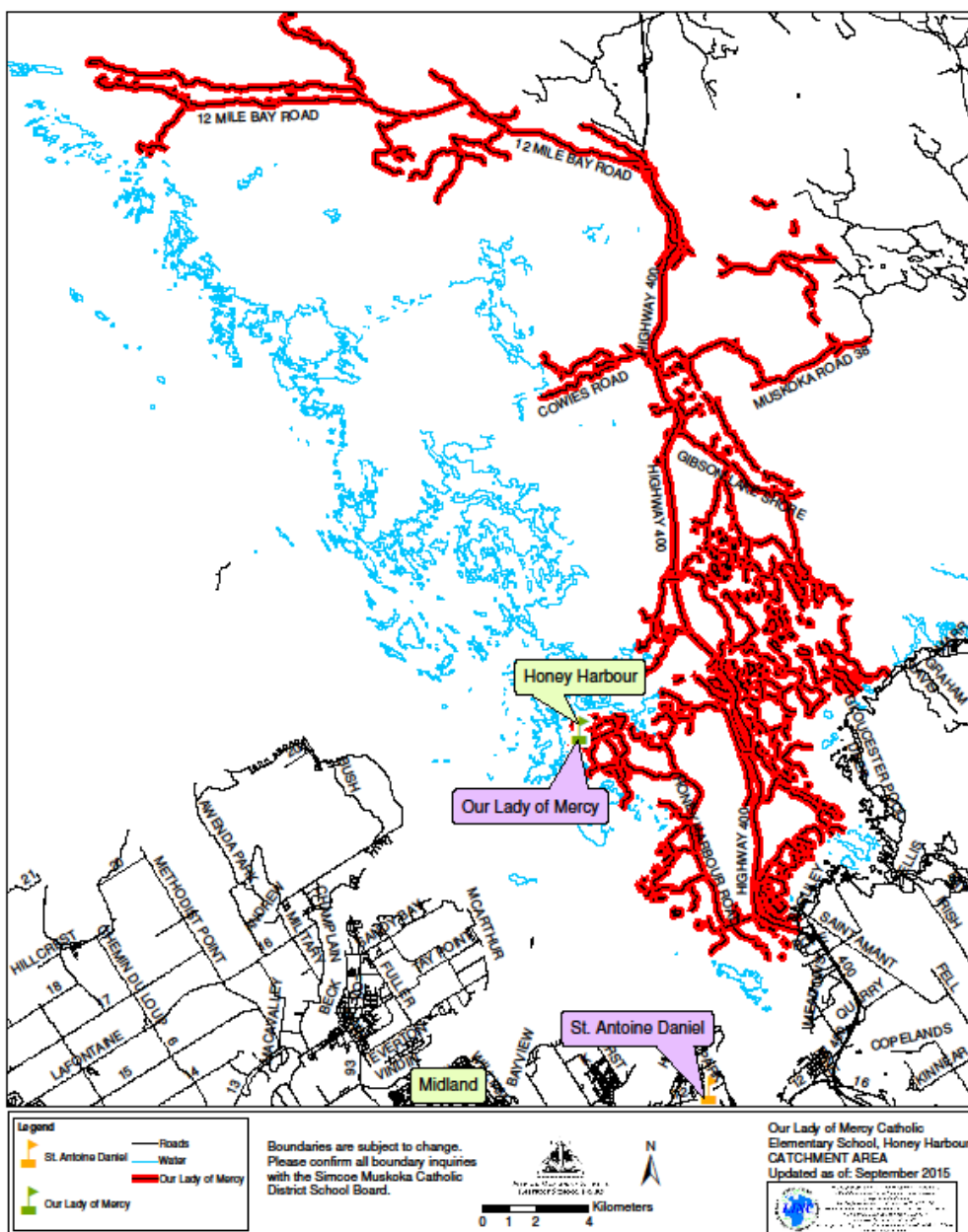
OUR LADY OF MERCY

October 5, 2016

1.7 BOUNDARY MAPS

The following provides a map showing the elementary school location and the elementary school boundary.

OUR LADY OF MERCY CATHOLIC ELEMENTARY SCHOOL BOUNDARY MAP



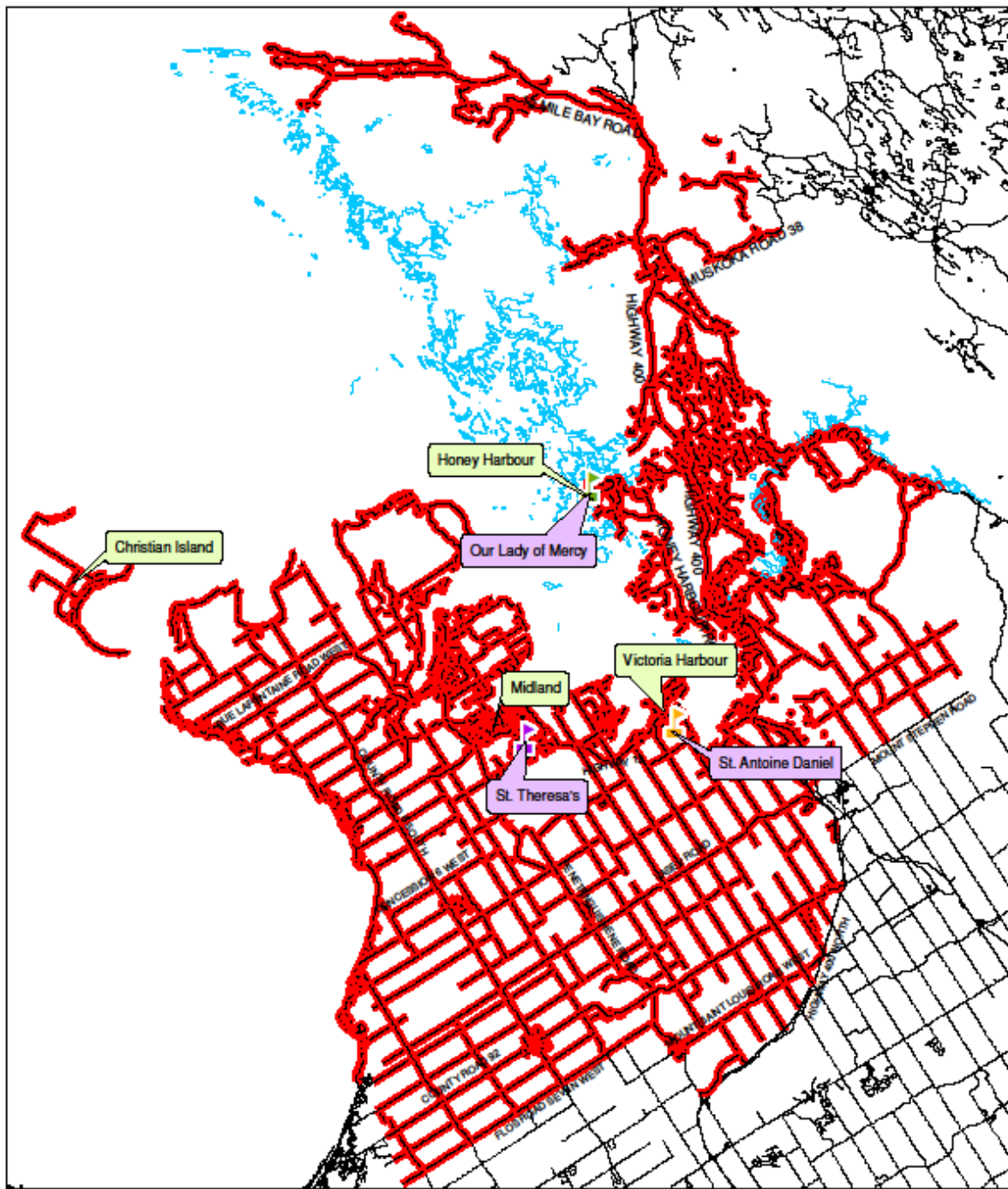


SCHOOL INFORMATION PROFILE

OUR LADY OF MERCY

October 5, 2016

ST. THERESA'S CATHOLIC SECONDARY SCHOOL BOUNDARY MAP



Legend

- Our Lady of Mercy
- St. Theresa's
- St. Antoine Daniel
- Roads
- Water
- St. Theresa's

Boundaries are subject to change. Please confirm all boundary inquiries with the Simcoe Muskoka Catholic District School Board.

0 2 4 8 Kilometers

St. Theresa's Catholic Secondary School, Midland CATCHMENT AREA Updated as of: August 2015



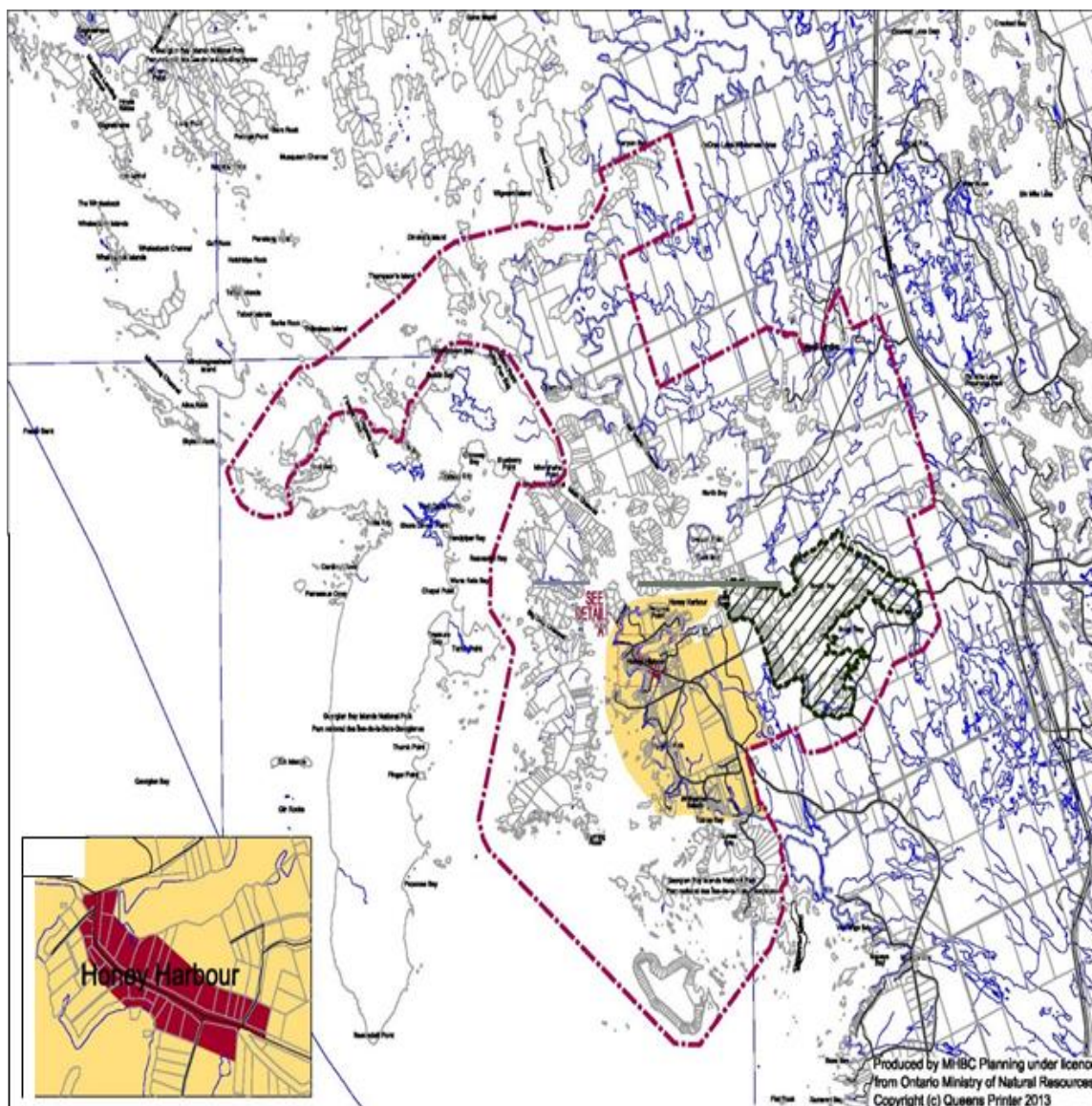
SCHOOL INFORMATION PROFILE

OUR LADY OF MERCY

October 5, 2016

1.8 OFFICIAL PLAN

The following provides a map showing the school site, the current official plan or secondary plan designation from the municipality for the school site and adjacent lands. The official plan description is added below the map or on an adjacent page.



School site has an Institutional designation with Institutional and Residential designations adjacent.



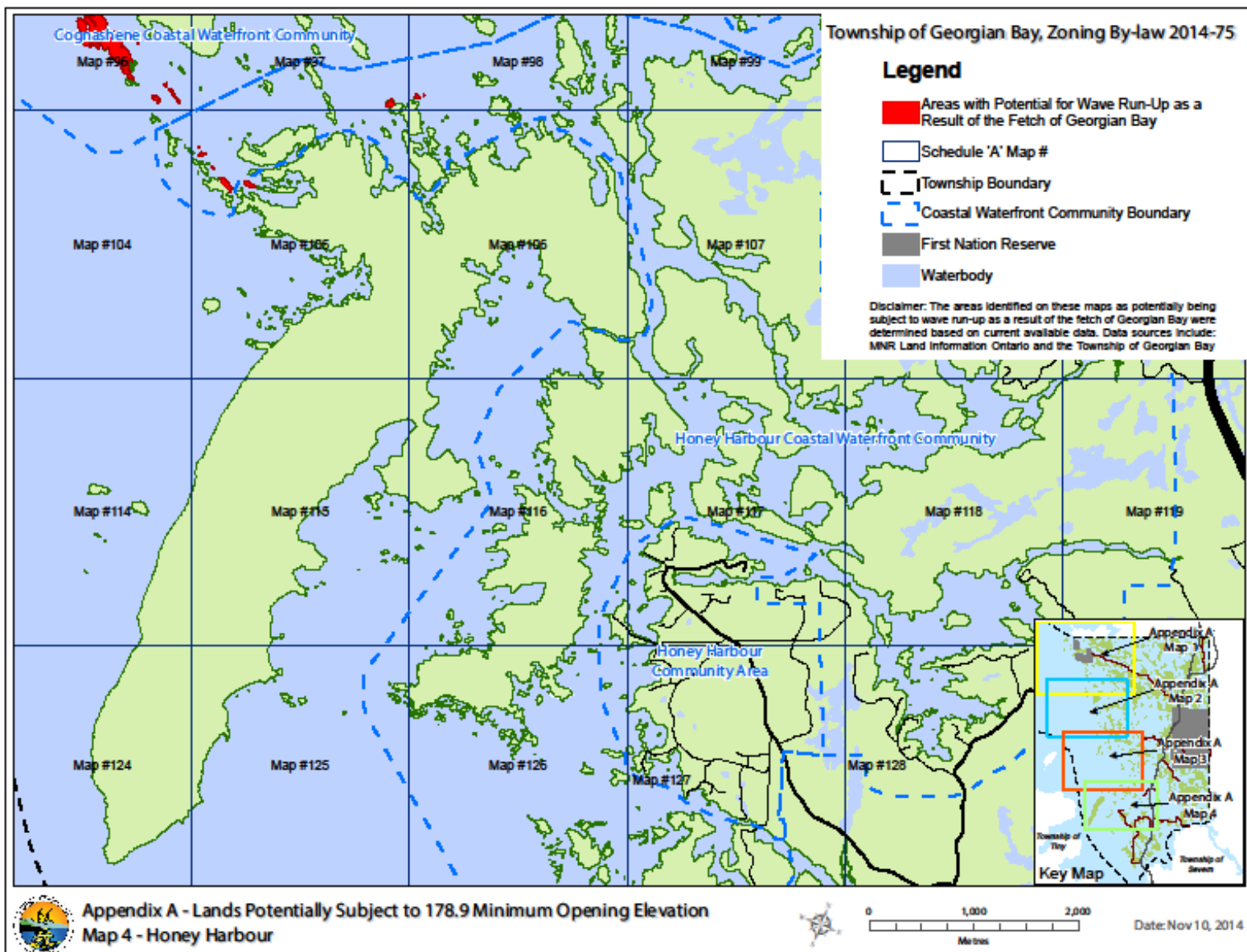
SCHOOL INFORMATION PROFILE

OUR LADY OF MERCY

October 5, 2016

1.9 ZONING BY-LAW

The following provides a map showing the school site, the current zoning from the municipality for the school site and adjacent lands, and any dual or underlying zoning on the property. The zone description is added below the map or on an adjacent page.



School site is zoned Institutional with Institutional and Residential zoning adjacent.



SCHOOL INFORMATION PROFILE

OUR LADY OF MERCY**October 5, 2016****PART 2 – FACILITY CONDITION PROFILE****2.1 FACILITY CONDITION INDEX**

The facility Condition Index (FCI) is the building condition as determined by the Ministry of Education by calculating the five-year renewal needs and the replacement value for each facility.

School Name	Our Lady of Mercy
Replacement Value (A)	\$ 4,895,720
5 Year Renewal Needs (B)	\$ 851,880
Facility Condition Index	17.4% (B) / (A)

2.2 10 YEAR RENEWAL HISTORY

The 10 year renewal history lists those major repairs at the school which are captured by the TCPS/VFA facilities database. The summary includes the year undertaken, the specific renewal item (e.g. Roof Replacement), the value of that repair and a cumulative value of all repairs undertaken within the 10 year time frame. The table excludes routine maintenance and other items not considered as renewal under the Tangible Capital Assets guide.

SCHOOL YEAR	RENEWAL ITEM	COST	CUMULATIVE COST
2015/2016		-	-
2014/2015		-	-
2013/2014		-	-
2012/2013		-	-
2011/2012		-	-
2010/2011	Disability Accessibility	\$ 14,397	\$ 14,397
2009/2010		-	-
2008/2009		-	-
2007/2008		-	-
2006/2007		\$ 32,634	\$ 47,031
2005/2006		\$ 3,147	\$ 50,178
	TOTAL	\$ 50,178	

Note: TCPS/VFA = Tangible Capital Property Summary and is a database used by the Ministry of Education and School Boards to track financial information on schools facilities condition.



SCHOOL INFORMATION PROFILE

OUR LADY OF MERCY

October 5, 2016

2.3 5 YEAR RENEWAL REQUIREMENTS

The 5 year renewal requirements lists those major repairs which are captured by the TCPS/VFA facilities database and listed by priority. The summary includes the year to be undertaken, the specific renewal item (e.g., Roof Replacement), the value of that repair and a cumulative value of all proposed renewal projects.

YEAR	RENEWAL ITEM	COST	CUMULATIVE COST
2016/2017	Lighting and Branch Wiring	\$205,984	\$205,984
2016/2017	Ceiling Finishes	\$81,932	\$287,916
2016/2017	Domestic Water Distribution	\$11,452	\$299,368
2016/2017	Exterior Doors	\$21,840	\$321,208
2016/2017	Floor Finishes	\$34,349	\$355,557
2016/2017	Partitions	\$11,418	\$366,975
2016/2017	Playing Field/Asphalt Renewal	\$68,640	\$435,615
2016/2017	Plumbing Fixtures	\$17,000	\$452,615
2016/2017	Roof Coverings	\$297,464	\$750,079
2016/2017	Terminal and Package Units	\$38,896	\$788,975
2016/2017	Wall Finishes	\$62,925	\$851,880
	TOTAL	\$ 851,880	

Note: TCPS/VFA = Tangible Capital Property Summary and is a database used by the Ministry of Education and School Boards to track financial information on schools facilities condition.



SCHOOL INFORMATION PROFILE

OUR LADY OF MERCY**October 5, 2016****2.4 SCHOOL UTILITY COSTS**

The utility cost data will be reported for the last complete year available and includes the costs for Natural Gas, Water, and Electricity as billed by the local utility. The total cost represents the cost for the year including the costs for portable or other licensed or leased facilities within the school.

UTILITY COSTS FOR THE YEAR	
Natural Gas	-
Water	-
Hydro	31,280
TOTAL	31,280
Building Area – Permanent (A)	1,271
Building Area – Non Permanent (B)	0
TOTAL BUILDING AREA (A + B)	1,271
Cost per square foot	\$24.61

Notes on Utility Costs (if applicable)

Water services by private well. Water testing is therefore an ongoing requirement, with associated costs.

2.5 SCHOOL ACCESSIBILITY MEASURES

The school accessibility measures represent the current Accessibility Inventory for the school as calculated by the Plant Department.

School Name	Our Lady of Mercy
Number of Storeys	1
Accessible Entrance	Yes
Door Operator	Yes
Front	Yes
Other	n/a
Lift Devices	n/a
Elevator	n/a
Stage Lift	n/a
Other Lift	n/a
Barrier Free Washroom	Yes
Accessibility to Instructional Areas	Yes

Notes on Accessibility (if applicable)



SCHOOL INFORMATION PROFILE

OUR LADY OF MERCY**October 5, 2016****PART 3 – STUDENT DATA PROFILE****3.1 ENROLMENT HISTORY (5 YEARS)**

The historical enrolment is provided on a grade by grade basis for the last 5 years including the current year as of October 31st of each year.

SCHOOL YEAR	JK	SK	1	2	3	4	5	6	7	8	9	10	11	12	TOTAL	UTILIZATION
2012/2013	3	5	4	2	4	5	9	4	6	5					47	28%
2013/2014	1	3	2	4	1	2	4	8	4	5					34	20%
2014/2015	0	2	2	0	3	2	2	4	8	5					28	17%
2015/2016	3	0	2	2	0	2	2	2	3	8					24	15%
2016/2017	2	3	0	1	1	0	4	2	1	2					16	10%

3.2 ENROLMENT PROJECTIONS (15 YEARS)

The projected enrolment is provided on a grade by grade basis for the next 15 years (excluding the current year) for the school.

SCHOOL YEAR	JK	SK	1	2	3	4	5	6	7	8	9	10	11	12	TOTAL	UTILIZATION
2017/2018	2	2	3	0	1	1	0	4	2	1					16	10%
2018/2019	3	3	2	2	0	2	2	0	2	2					18	11%
2019/2020	3	3	2	1	2	0	1	1	0	2					15	9%
2020/2021	3	3	2	2	1	2	0	1	1	0					15	9%
2021/2022	2	3	2	2	2	1	2	0	1	1					16	10%
2022/2023	2	2	2	2	2	2	1	2	0	1					16	10%
2023/2024	2	2	2	2	2	2	1	1	2	0					16	10%
2024/2025	2	2	2	2	2	2	1	1	1	1					18	11%
2025/2026	2	2	2	2	2	2	1	1	1	1					16	10%
2026/2027	2	2	2	2	1	1	1	1	1	1					14	8%
2027/2028	2	2	2	2	1	1	1	1	1	1					14	8%
2028/2029	2	2	2	2	2	1	1	1	1	1					15	9%
2029/2030	2	2	2	2	2	1	1	1	1	1					15	9%
2030/2031	2	2	2	2	2	1	1	1	1	1					15	9%
2031/2032	2	2	2	2	2	1	1	1	1	1					15	9%

Note: The Long Term Projections were developed by Watson & Associates and were updated in July 2016. The projections are based on historical assumptions for JK students and average retention rates.



SCHOOL INFORMATION PROFILE

OUR LADY OF MERCY

October 5, 2016

3.3 STUDENT PROXIMITY

Student proximity measures the distance from the student's home address to the school using straight line distances. The data is aggregated by grade division and expressed as both a total number of students and as a percentage of the current year enrolment based on September 2016 enrolment.

DIVISION	< 800 metres	800-1600 metres	1600-3200 metres	> 3200 metres
Primary JK-3	1	2	2	2
Junior 4-6	0	0	2	4
Intermediate 7-8	0	0	0	3
Secondary 9-12	n/a	n/a	n/a	n/a
TOTAL STUDENTS	1	2	4	9
% of TOTAL	6%	13%	25%	56%

Average Distance to School: 8.32 km

Total Students: 16



SCHOOL INFORMATION PROFILE

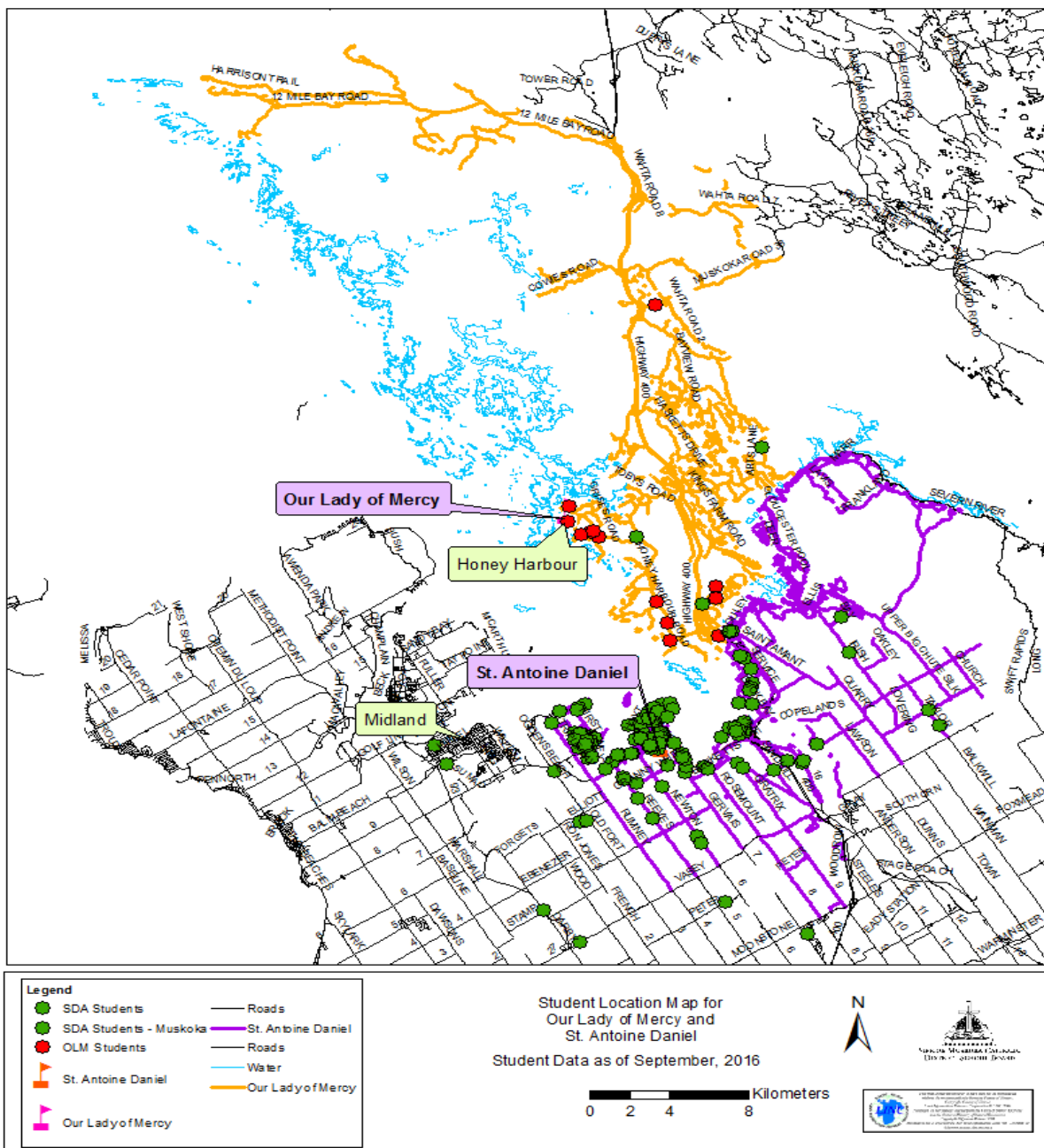
OUR LADY OF MERCY

October 5, 2016

3.4 PUPIL DISTRIBUTION

The following provides a map showing the family home locations for each of the students attending the school under review. Each dot on the map identifies a family and not an individual student.

STUDENT DISTRIBUTION MAP FOR
OUR LADY OF MERCY AND ST. ANTOINE DANIEL





SCHOOL INFORMATION PROFILE

OUR LADY OF MERCY**October 5, 2016****3.5 OUT OF AREA STUDENTS**

Out of Area students are calculated using home address of the student as compared to the current school boundary.

DIVISION	In Area Students	Out of Area Students	% of Out of Area
Primary JK-3	7	0	0%
Junior 4-6	6	0	0%
Intermediate 7-8	3	0	0%
Secondary 9-12	n/a	0	0%
TOTAL STUDENTS	16	0	0%

3.6 STUDENT TRANSPORTATION

Student transportation data is calculated for the current year as of September 7th. The students entitled to transportation are those identified by SCSTC by virtue of distance to school, by identified impediments to safe access to school (i.e. road conditions) or by identification from Student Services.

DIVISION	Entitled to Transportation	Not Entitled to Transportation	% Not Entitled to Transportation
Primary JK-3	6	1	14.29 %
Junior 4-6	4	0	0.00 %
Intermediate 7-8	5	0	0.00 %
Secondary 9-12	N/A	N/A	N/A
TOTAL STUDENTS	15	1	6.25 %

Note: Entitled to Transportation = student residing outside of the 1.6 km walking area

Note: Not Entitled to Transportation = student residing within the 1.6 km walking zone

FOR TRANSPORTED STUDENTS	
Shortest Bus Ride (in minutes)	3
Longest Bus Ride (in minutes)	74
Average Bus Ride (in minutes)	23.58

Notes on Transportation (if applicable)

2 Full Size vehicles

1 Mini-bus

1 Minivan

OLM shares bussing with: Honey Harbour, Midland Secondary School, St. Theresa's & Penetanguishene Secondary School



SCHOOL INFORMATION PROFILE

OUR LADY OF MERCY**October 5, 2016****PART 4 - INSTRUCTIONAL DATA PROFILE****4.1 STAFF ALLOCATION TO SCHOOL**

The staff allocation to school includes the current year teaching and non-teaching staff allocation to the school. The staff values are expressed to two decimal places.

TEACHING STAFF ALLOCATION	NUMBER
Classroom Teachers	2.0
Program Support (SERT)	0.06
Prep Time (JK-8)	0.13
FSL (1-8)	0.16
Extra Prep Time	n/a
Library	0.02
Principal	0.5
Vice Principal	n/a
DECE	n/a
TOTAL	2.87

NON-TEACHING STAFF ALLOCATION	NUMBER
Secretary	1.0
EA's	1.0
Custodians	0.63
Other	n/a
TOTAL	2.63

TOTAL STAFF	5.50
--------------------	-------------

4.2 SPECIALIZED COURSES AND PROGRAMS

Please indicate if the school has any of the following programs and the grades served by these programs. If the program is not listed here, please insert a line and add the program.

PROGRAMS	YES / NO	GRADES
Early Intervention Program		
Transition Program	YES	8
Section 23	NO	
Advanced Placement	NO	
SHSM (Secondary only)	n/a	
OYAP (Secondary only)	n/a	
Co-op Placements (Secondary)	n/a	



SCHOOL INFORMATION PROFILE

OUR LADY OF MERCY

October 5, 2016

4.3 CURRENT GRADE ORGANIZATION ELEMENTARY SCHOOLS ONLY

For the elementary schools, please indicate the number of students by grade and the organization for each class using the data from the Staffing Plus system. The teacher’s names should not appear.

TEACHER	STAFF FTE	PROGRAM	JK	SK	01	02	03	04	05	06	07	08	TOTAL
1	1.0	Pr.	2	3	1	1	1						8
2	0.5	Jr. / Int.						0	4	2	1	2	8
TOTAL	2.0		2	3	1	1	1	0	4	2	1	2	16

Number of Classes	2
Number of Combined Classes	2
% of Combined Classes	100 %
Average Class Size JK-8	10.67

Notes (if applicable)

There are advantages and disadvantages to the multi grade classes (JK-3; 4-8). It is noted that the lower enrolment is more limiting for students to have peer groups, however there are benefits of the small classes with leadership opportunities for older students to work with younger classmates and having classroom activities with grade level expectations.



SCHOOL INFORMATION PROFILE

OUR LADY OF MERCY

October 5, 2016

4.4 COURSE AND PROGRAM OFFERINGS SECONDARY SCHOOLS ONLY N/A

4.5 EXTRA-CURRICULAR ACTIVITIES

Provide a list of all extra-curricular activities including athletic teams, clubs, performing arts, community outreach and other school sponsored events that have been run within the last year. For each activity, indicate the number of participants or teams.

EXTRA-CURRICULAR ACTIVITY	# of PARTICIPANTS
See notes below	

There are several extra-curricular activities occurring at the school.

Co-ed Intermediate level Basketball, Volleyball, Cross Country, Track & field teams that include participants from Grade 6, 7 & 8.

Outdoor Ed program including cross country skiing.

Field trips that include the whole school (e.g Aquarium, Medieval Times) and school / community initiatives such as in support of Terry Fox.

Field trips have also been done jointly with other schools (last year Gr. 7 & 8 trip to Quebec with 2 other schools).



SCHOOL INFORMATION PROFILE

OUR LADY OF MERCY**October 5, 2016****PART 5 - OTHER SCHOOL USE PROFILE****5.1 NON SCHOOL PROGRAMS AND SERVICES**

This section describes the current non-school programs or services located at the school as well as any revenue from these non-school programs or services.

PROGRAM OR USER GROUP	ROOM(S) USED	REVENUE FROM CURRENT YEAR	COST RECOVERY

5.2 COMMUNITY PARTNERSHIPS N/A

This section describes the current community partnerships located at the school as defined by the Community Planning and Partnership Guideline and Board Policy as well as the revenue received from these partners.

COMMUNITY PARTNER	ROOM(S) USED	REVENUE FROM CURRENT YEAR	COST RECOVERY
		N/A	

5.3 COMMUNITY USE OF SCHOOL N/A

Provide the details for the Community Use of Schools for the current year including all permits up to the end of June that are in the current system. Indicate the category from the Community Use of Schools procedure, the number of hours used annually by the group and the days of the week that the permit user operates on.

COMMUNITY USE GROUP	CATEGORY	HOURS USED ANNUALLY	DAYS USED
		N/A	

Notes (if applicable)

--



SCHOOL INFORMATION PROFILE

OUR LADY OF MERCY**October 5, 2016****5.4 CHILD CARE** N/A

Please provide details regarding the Child Care programs at the school which are licensed under the Child Care & Early Years Act. This information will include the Child Care Operator, the licensed program capacity, the current number of children enrolled and the size of the facility within the school.

CHILD CARE OPERATOR		
PROGRAM	Licensed Capacity	Current Enrolment
Infant	N/A	
Toddler		
Pre-School		
Nursery School		
School Aged B & A		
SQUARE FOOTAGE OF SPACE		

Please indicate the square footage of the discrete space child care and the shared space child care areas as indicated on the child care license for the current year.

Licensed Spaces at School	
Dedicated Space Area	
Shared Space Area	
Number of Rooms	
Annual Revenue Received from Child Care	

All Child Care Centres are run on a cost recovery basis and are operated as not-for-profit entities.

5.5 CONTINUING EDUCATION N/A

Please list all continuing Education programs at the school that operate the school and the number of students served by the programs.

CONTINUING EDUCATION PROGRAMS	YES/NO	STUDENTS
International Language	NO	
Summer School	NO	
General Interest Courses	NO	
Night School	NO	
Other Programs		

Notes (if applicable)

--



SCHOOL INFORMATION PROFILE

OUR LADY OF MERCY

October 5, 2016

5.6 MUNICIPAL PROPERTY ASSESSMENT CORPORATION (MPAC) / RATEPAYERS ANALYSIS

Summary of Pre-School and School aged catholic children as identified through the Municipal Property Assessment Corporation (MPAC) database as of September 29, 2016.

Township of Georgian Bay, District of Muskoka

AGE (Years)	TOTAL	TOTAL CATHOLIC MALES	TOTAL CATHOLIC FEMALES	TOTAL CATHOLIC
0 to 3	0	0	0	0
4 to 13	24	2	1	3
14 to 18	44	6	8	14
TOTAL	68	8	9	17



SCHOOL INFORMATION PROFILE

OUR LADY OF MERCY**October 5, 2016****PART 6 – PARISH INFORMATION PROFILE****6.1 PARISH CONNECTIONS**

Identify the local Parishes serving the school community.

Parish	Our Lady of Mercy Parish
Location	2586 Honey Harbour Road
Distance from school to parish	100 metres

6.2 FAITH FORMATION

Provide information regarding the breadth of the faith formation programs available at the school and all programs run in conjunction with the parish on an annual basis in the current year.

FAITH FORMATION PROGRAMS	
Religion and Family Life Programs)
Sacramental Preparation)
Catholic Social Teachings) See note below.
Liturgical Celebrations)
Involvement with Parish)
Catholic Graduate Expectations, Curriculum Maps and Virtues)

Programs run in conjunction with Parish	Occurrence
See note below.	

Notes (if applicable)

There is a strong connection with the local parish, particularly due to the adjacency. The school is fortunate to have visits from the parish priest, in support of Faith Formation programs, as needed. Typically the school and parish work jointly on sacramental preparations. Due to the adjacency, the liturgical celebrations are typically held at the church with school students and staff walking over to the church.